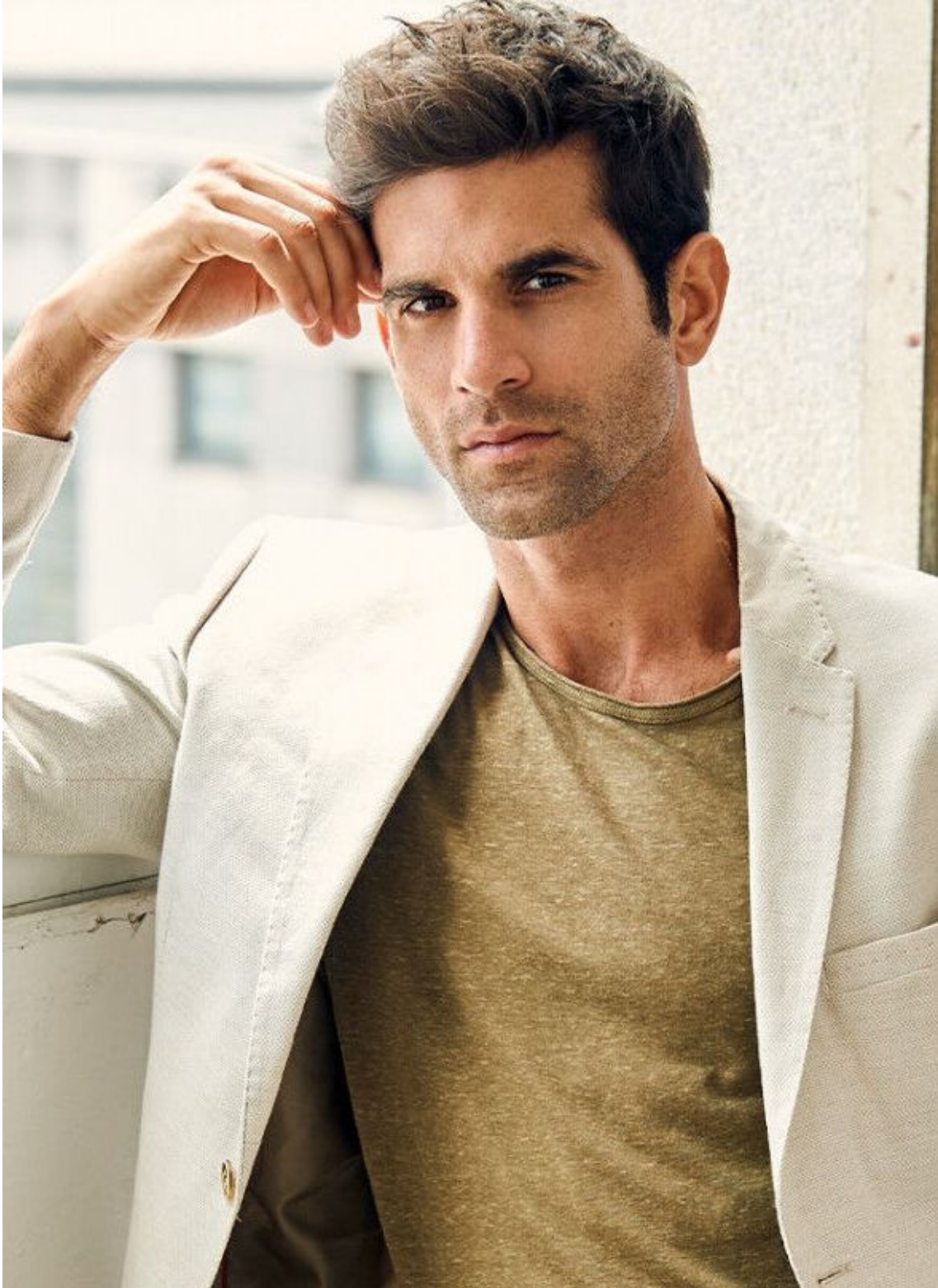


FRAN OSORIO

height 6'2" · bust 39.5" · waist 31.5" · hips 38.5" · suit 50
shoes size 45 EU/13.5 US/9.5 UK · hair brown · eyes brown



FRAN OSORIO

height 6'2" · bust 39.5" · waist 31.5" · hips 38.5" · suit 50
shoes size 45 EU/13.5 US/9.5 UK · hair brown · eyes brown



MGM
MODELS

MGM
MODELS

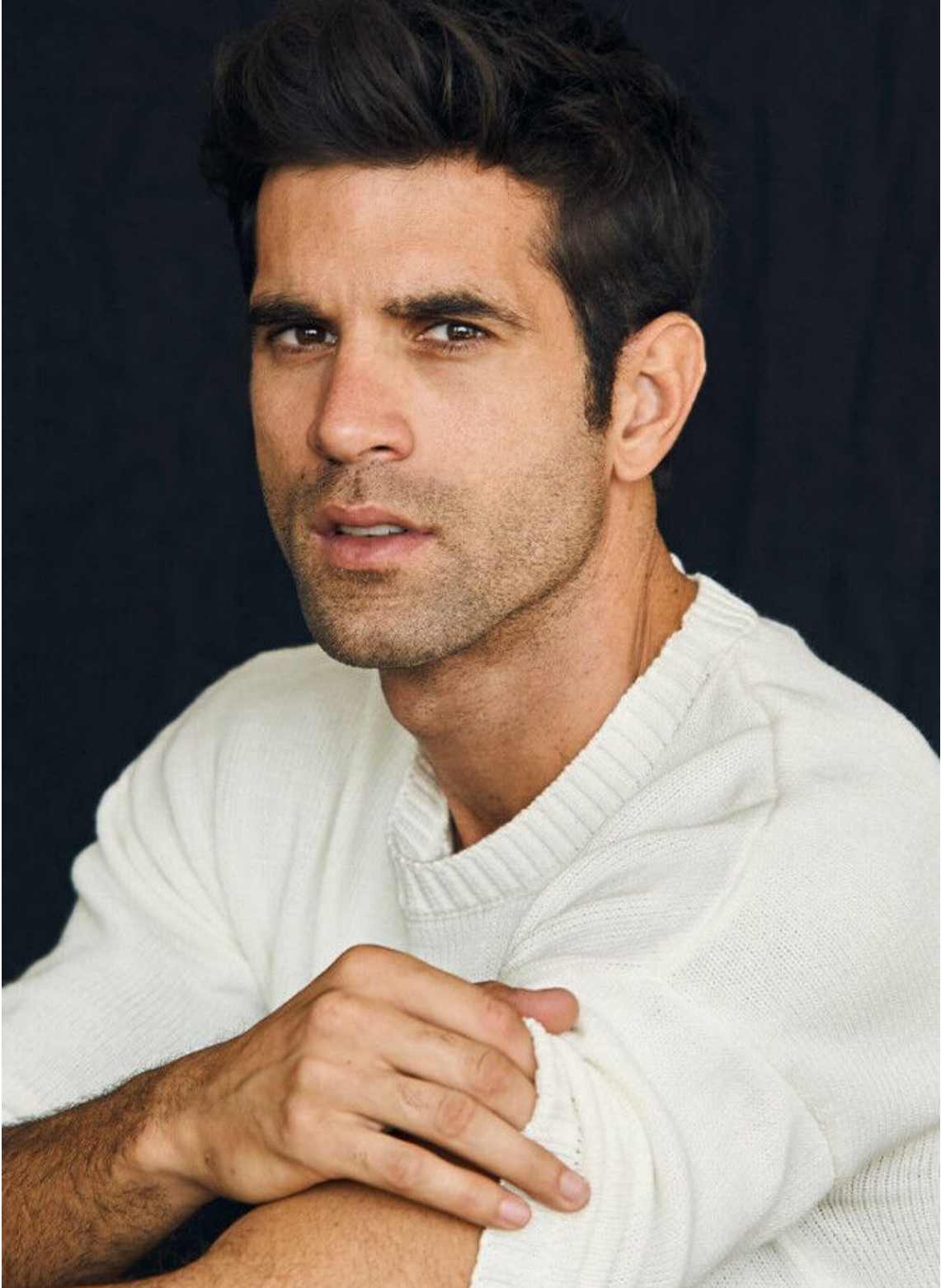
FRAN OSORIO

height 6'2" · bust 39.5" · waist 31.5" · hips 38.5" · suit 50
shoes size 45 EU/13.5 US/9.5 UK · hair brown · eyes brown



FRAN OSORIO

height 6'2" · bust 39.5" · waist 31.5" · hips 38.5" · suit 50
shoes size 45 EU/13.5 US/9.5 UK · hair brown · eyes brown



FRAN OSORIO

height 6'2" · bust 39.5" · waist 31.5" · hips 38.5" · suit 50
shoes size 45 EU/13.5 US/9.5 UK · hair brown · eyes brown



Traje y polo **Prada**
(www.prada.com),
zapatos **Louis
Vuitton**, reloj **Rolex
Cellini Time**.

Página anterior:
Saco **Harmont
& Blaine** (www.harmontblaine.it), polo **Adolfo
Dominguez**, cinturón
Louis Vuitton,
pantalón y pañuelo
Hackett, zapatos
Hugo Boss.

Locación: Hotel Las
Casas, San Miguel
de Allende (www.doscasas.com).

AGOSTO 2016 ROBB REPORT MÉXICO 101

FRAN OSORIO

height 6'2" · bust 39.5" · waist 31.5" · hips 38.5" · suit 50
shoes size 45 EU/13.5 US/9.5 UK · hair brown · eyes brown



FRAN OSORIO

height 6'2" · bust 39.5" · waist 31.5" · hips 38.5" · suit 50
shoes size 45 EU/13.5 US/9.5 UK · hair brown · eyes brown



FRAN OSORIO

height 6'2" · bust 39.5" · waist 31.5" · hips 38.5" · suit 50
shoes size 45 EU/13.5 US/9.5 UK · hair brown · eyes brown



FRAN OSORIO

height 6'2" · bust 39.5" · waist 31.5" · hips 38.5" · suit 50
shoes size 45 EU/13.5 US/9.5 UK · hair brown · eyes brown



FRAN OSORIO

height 6'2" · bust 39.5" · waist 31.5" · hips 38.5" · suit 50
shoes size 45 EU/13.5 US/9.5 UK · hair brown · eyes brown



MGM
MODELS

MGM
MODELS

FRAN OSORIO

height 6'2" · bust 39.5" · waist 31.5" · hips 38.5" · suit 50
shoes size 45 EU/13.5 US/9.5 UK · hair brown · eyes brown



Trench coat **Burberry** (www.burberry.com), camisa **Hackett**, pantalón **Ermenegildo Zegna**, lentes **Céline** (www.celine.com), maletín y zapatos **Louis Vuitton**.

Página anterior: traje **Burberry**, camisa **Z Zegna**.
Camioneta **BMW X5 xDrive40e** (www.bmw.com).

Locación: San Miguel de Allende.

Maquillaje y peinado:
Mónica Sesosse
Modelo: Francisco Osorio para Fragmentos
Asistente de Fotografía:
Sofía Padilla

AGOSTO 2016 | ROBB REPORT MÉXICO | 105